

# PHT, Incorporated

[www.pht.kr](http://www.pht.kr)

UNIDO - Sesame Seeds/2022.01.20



presented by: CEO AHN Ji Hyun



# 1. Company profile

- \*1.2001.07.20: established an Incorporated International Freight Forwarding - Seoul  
asset: usd300,000  
founder: AHN Ji Hyun
  
- \*2.2018.07.01: Agricultural Grain trading - Seoul
  
- \*3.Agricultural buying/selling
  - 2018: usd300,000
  - 2019: usd600,000
  - 2020: usd1,300,000
  - 2021: usd2,300,000

## 2. Trademarks



image: dragon

® No.: [40-1651750](#)

dated: 2020.10.13



image: turtle

® No.: [40-1924958](#)

dated: 2022.10.22

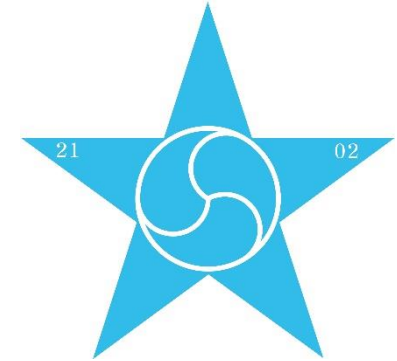


image: 3 universe-

® No.: star

dated:



### 3. Sample 1

the worst case: sands, tiny rocks hurt the roasting-machine, break the teeth, etc.





# 4. Sample 2

Good quality needs the social infra-structures



good quality

moisture: 6%



↓ sands, tiny rocks



## 5. VIDEO: processing

Video: [processing](#) film

Air-washing, blowing the dust & sediments, optical selecting, packing



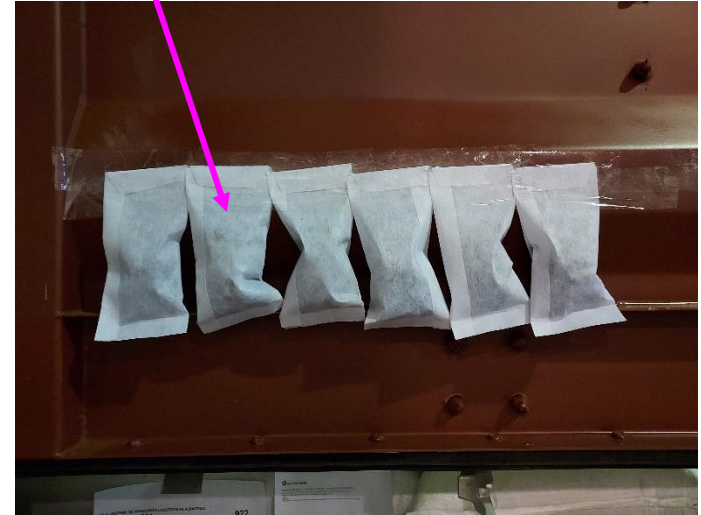


# 6. dehumidifying, fumigation, stuffing

dehumidifier



↓ Fumigator



fumigation certificate



pallets on the bottom  
to help air circulation

# 7. specification

version: [sssp22-0318](#)

Parameter	Specification	Remarks
01.commodity	<b>Sesame Seeds</b>	1207.40-000 whitish or bright yellowish white
02.P.O.Loading 03.P.O.Discharge	Lome, Djibouti Busan	TOGO, ETHIOPIA, SUDAN(port Sudan) KOREA-south
04.C/O	TOGO, ETHIOPIA	SUDAN
05.product age	-12 months	latest harvested
06.moisture	-7%	normal 6 ~ 7%
07.volume weight	+600/1L	
08.oil content	+52%	
09.foreign material	-0.1%	
10.immature kernel	-0.2%	
11.cortical damage	-3%	
12.acidity	-2%	
13.color/white	+99%	whitish or bright yellowish white
14.burnt grain	-0.3%	
15.dust/sediment	-0.1%	with air-washed
16.bag/weight	30kg/bag	buyer's design. <a href="#">bag1</a> <a href="#">bag2</a> <a href="#">tag</a>
17.sorted 18. <a href="#">pesticide residue</a> 19.pay-load	18. specification	17. +99% sorted out the defects by air-washing, the visual color selector, etc. (SORTEX) 18. Korean government standards. If fails, KOREAN government orders to ship back. 19. 18~22mt/20GP, ~24mt/40GP
20.types	*1.Humera *2.Wellega	*1. 50% oil, whitish, tasty, use for bread, cake, tahini *2. 52% oil, brownish, smaller, use for oil extraction



## 8. laundry, parching, extraction



### Laundry

[http://www.pht.kr/sesame/210330\\_laundry2.mp4](http://www.pht.kr/sesame/210330_laundry2.mp4)



### Roasting

[http://www.pht.kr/sesame/210330\\_parching5.mp4](http://www.pht.kr/sesame/210330_parching5.mp4)



### Squeezing=Extraction

[http://www.pht.kr/sesame/210330\\_squeezing7.mp4](http://www.pht.kr/sesame/210330_squeezing7.mp4)

# 9. Payment versus Quality

